



PRODUCT CATALOGUE

AN ISO 9001:2015 CERTIFIED COMPANY

***PREM* ENGINEERING PVT. LTD.**

® PREM and LOGO registered trademark of PREM ENGINEERING PVT. LTD.



Narendrakumar C. Dave
(Navinkaka)
Founder Chairman
(1938 - 2018)

: About Company :

An ISO 9001:2015 Certified Company

Prem Engineering Pvt Ltd was founded by Mr. Narendrakumar C. Dave very well known as (Navinkaka), Chairman of the Company.

Directors

Jaydeep N. Dave

Ankur N. Dave

Our Products are marketed under " PREM " brand in India & Exports markets.

Having 60 Years of Expertise in Products, High Speed Diesel Engines, Slow Speed Diesel Engines , Portable Diesel Engines, Pumping Sets, Diesel Generating Sets , Alternators, India Mark II Hand Pumps, Afridev Hand Pumps, Grinding Mills , Concrete Mixers , Bearings, Submersible Pumps, Open Well Pumps, Engine Oil Lubricants, Ox Plough & Ceramic Tiles.

We are Dealers for EICHER Air Cooled Diesel Engines 12hp to 56hp.

Products e-catalogues pdf files can be downloaded from our website

www.premengineering.co.in

Certificate of Registration



This is to Certify That The Quality Management System of

PREM ENGINEERING PVT. LTD.

PLOT NO. 334, G.I.D.C., AJI INDUSTRIAL ESTATE, PHASE - II,
RAJKOT - 360003, GUJARAT, INDIA

has been assessed and found to conform to the requirements of

ISO 9001:2015

for the following scope :

MANUFACTURER AND EXPORTERS OF HIGH SPEED DIESEL
ENGINES, SLOW SPEED DIESEL ENGINES, CENTRIFUGAL PUMPS,
SUBMERSIBLE PUMPS, HAND PUMPS, DIESEL GENERATING SETS
AND SPARE PARTS FOR AGRICULTURAL PURPOSE.

Certificate No	21DQIH05	
Initial Registration Date	: 27/07/2021	Issuance Date : 27/07/2021
Date of Expiry*	: 26/07/2024	
1st Surve. Due	: 27/06/2022	2nd Surve. Due : 27/06/2023

Alu

DIRECTOR

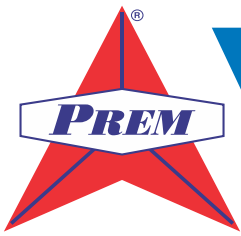
ROHS Certification Pvt. Ltd.

B-7, 1st Floor, Sector-2 Noida, Gautam Budh Nagar, UP-201301

e-mail : info@rohscertification.co.in | website : www.rohscertification.co.in

The Registration is not a Product Quality Certificate. *Subject to successful completion of surveillance audits, Visit for verification on www.rohscertification.co.in
Certificate is the property of ROHS and return when demanded





WATER COOLED DIESEL ENGINES

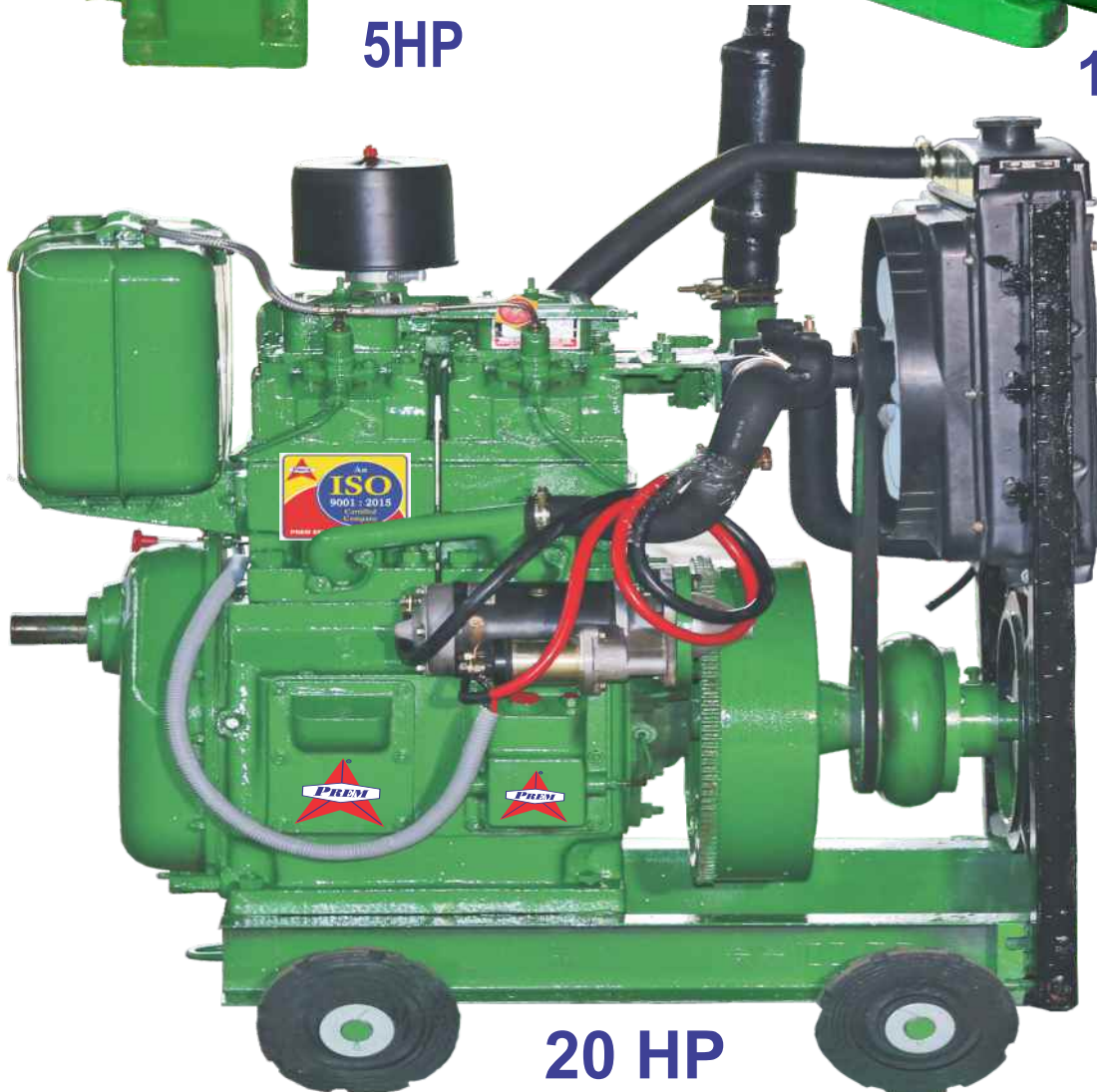
Application Use : Pumpsets, Diesel Generating Sets, Industrial & Construction Equipments



5HP



14 HP



20 HP

WATER COOLED DIESEL ENGINES

Sr. No.	Description	Model	PVP - 5 *	PVP - 8A *	PVP - 10	PVP - 14	PVP - 20
			AV-1	TV-1	DM-10	TV-1	DM-20
			PVP - 6 *	PVP - 8	PVP - 12	PVP - 16	PVP - 25
			AV-1	DM-8	DM-12	DM-16	DM-25
1.	Vertical, Water Cooled, Compression Ignition, Direct Injection, Four Stroke Cycle High Speed Diesel Engine	Type	BB/TRB* ISI	BB/TRB* ISI	BB/TRB	BB	BB
			BB/TRB* ISI	BB/TRB	BB/TRB		
2.	Rated Power (As per Is : 1001-1981 & IS : 11170-1985)	HP/KW	5/3.7 6.5/4.8	8.5/5.9 8/5.9	10/7 12.5/7.35	14/10.3 16/11.8	20/14.7 25/18.4
3.	Rated Speed	RPM	1500	1600 1500	1500	1500	1500
4.	No. of Cylinders	---	One	One	One	Two	Two
5.	Bore & Stoke in mm	mm	80/110 85/110	87.5/110 95/110	102/116 114/116	87.5/110 95/110	102/116 114/116
6.	Specific Fuel Consumption at Full Load and at std. ref. conditions	g/bhp. hr g/kwh.	185 251	185 251	185 251	185 251	185 251
7.	Net Weight / Gross Weight	Kgs. (Approx)	160/210	165/215 175/225	185/235 200/250	250/350 260/365	275/385 290/400
8.	Size	In Inch	26 X 24 X 35	26 X 24 X 35	26 X 24 X 35	36 X 24 X 35	36 X 24 X 35

* Marked ISI models



AIR COOLED DIESEL ENGINES

Application Use : Pumpsets, Diesel Generating Sets, Industrial & Construction Equipments



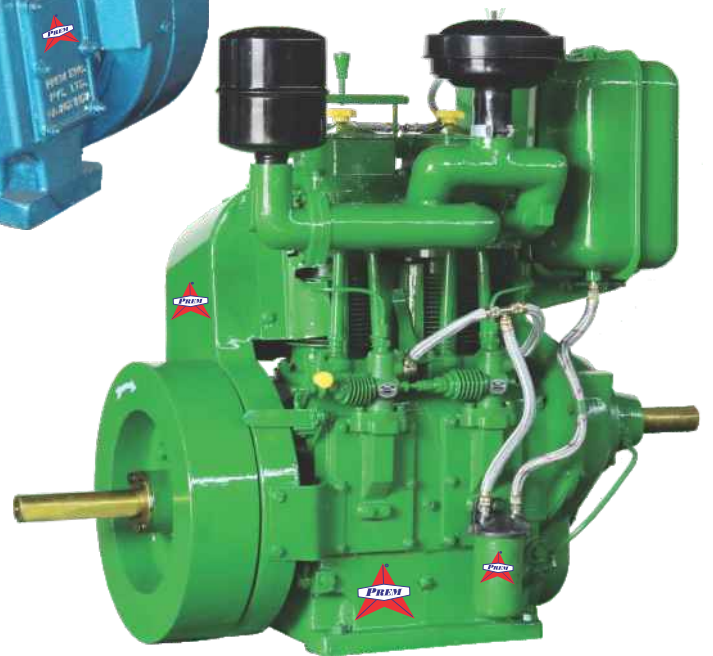
Blower Type Electric Start



With Variable Speed lever



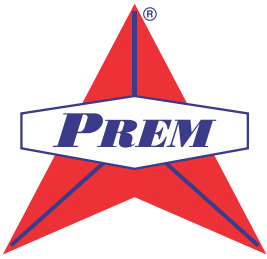
TAF2 Type



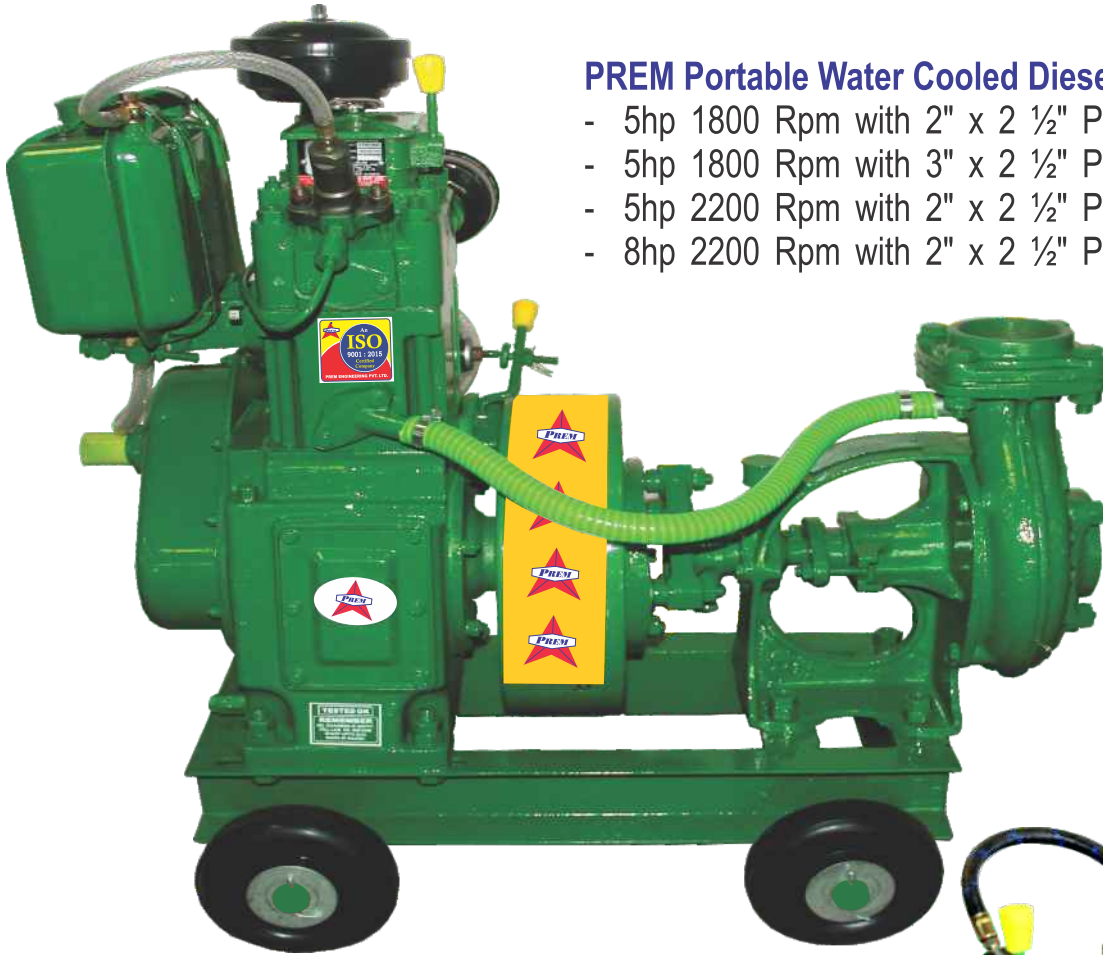
TAF2 Type

AIR COOLED DIESEL ENGINES

Sr. No.	Description	Model	PA - 5 CAF-1	PA - 6 TAF-1	PA - 8 DAF - 8	PA - 10 DAF - 10	PAP - 12 TAF - 12	PA - 12 TAF - 2	PA - 16 DAF - 16	PA - 20 DAF - 20
1.	Vertical, Air Cooled, Compression Ignition, Direct Injection, Four Stroke Cycle High Speed Diesel Engine	Type-1	PAP-5 TRB	PAP-6 TRB	PAP-8 TRB CAF-8	PAP-10 TRB CAF-10	PAP-12 TRB	BB BUSH GP	BB BUSH GP	BB BUSH GP
		Type-2	BB BUSH PP	BB BUSH GP	BB BUSH GP	BB BUSH GP	BB BUSH GP	BB BUSH GP	BB BUSH GP	BB BUSH GP
2.	Rated Power (As per Is : 1001-1981 & IS : 11170-1985)	HP/KW	5/3.7	6/4.4	8/5.9	10/7.35	12/8.8	12/8.8	16/11.8	20/14.7
3.	Rated Speed	RPM	1500	1500	1500	1500	1500	1500	1500	1500
4.	No. of Cylinders	---	One	One	One	One	One	Two	Two	Two
5.	Bore & Stoke in mm	mm	80/110	87.5/110	95/110	102/116	114/116	87.5/110	95/110	102/116
6.	Specific Fuel Consumption at Full Load and at std. ref. conditions	g/bhp. hr g/kwh.	185 251	185 251	185 251	185 251	185 251	185 251	185 251	185 251
7.	Net Weight / Gross Weight	Kgs. (Approx)	160/210	170/220	190/240	200/250	210/260	275/350	285/360	295/370
8.	Size	In Inch	25 X 21 X 25	25 X 21 X 25	25 X 21 X 25	25 X 22 X 25	26 X 24 X 35	36 X 24 X 35	36 X 24 X 35	36 X 24 X 35
9.	PA Models are with plunger type lub oil pump and sheet metal gear cover.									
10.	BUSH type models are with Gear oil pump and Cast Iron Gear cover.									
11.	Extra attachment are also available. They are at optional, Blower Type Electric also available.									



PORTABLE WATER COOLED DIESEL ENGINES & PUMPING SETS



PREM Portable Water Cooled Diesel Engine Pumping Set :

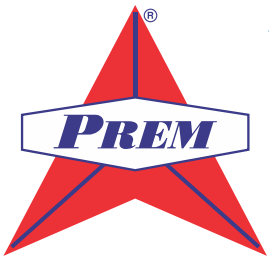
- 5hp 1800 Rpm with 2" x 2 ½" Pump on 4 Wheel trolley.
- 5hp 1800 Rpm with 3" x 2 ½" Pump on 4 Wheel trolley.*
- 5hp 2200 Rpm with 2" x 2 ½" Pump on 4 Wheel trolley.
- 8hp 2200 Rpm with 2" x 2 ½" Pump on 4 Wheel trolley.



**5 HP
PORTABLE**

Model No.	HP	RPM	BORE	STROKE	TYPE	ISI
PVP 35	3.5	1500	76	76	TRB	---
PVP 50	5	1800	76	76	TRB	---
PVP 50A*	5	1800	85	80	TRB	ISI
PVP 60	6	1800	85	80	TRB	---

* Marked ISI models



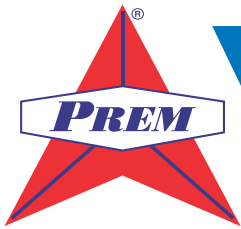
PORTABLE AIR COOLED DIESEL ENGINES & PUMPING SETS

PREM Portable Air Cooled Diesel Engine Pumping Set :

- 5hp 1800 Rpm with 2" x 2 ½" Pump on 4 Wheel trolley.
- 5hp 1800 Rpm with 3" x 2 ½" Pump on 4 Wheel trolley.
- 5hp 2200 Rpm with 2" x 2 ½" Pump on 4 Wheel trolley.
- 8hp 2200 Rpm with 2" x 2 ½" Pump on 4 Wheel trolley.



Model No.	HP	RPM	BORE	STROKE	TYPE
PAP 35	3.5	1500	76	76	TRB
PAP 50	5	1800	76	76	TRB
PAP 50A	5	1500	85	80	TRB
PAP 60	6	1800	85	80	TRB



SLOW SPEED DIESEL ENGINES

Agricultural Irrigation, Thrashers, Flour Mill, Corn Mill, Generating Sets, Oil Mill, Saw Mill, Crusher, Air Compressor, Concrete Mixer and other various Industrial uses.



8 HP



10 HP



12 HP



12 HP, 16 HP, 20 HP



6 H.P.



8 H.P.



10 H.P.



20/2 H.P.

TECHNICAL DATA FOR SLOW SPEED DIESEL ENGINE



No.	Particulars		PVL-6*	PVL-8*	PVL-10*	PVL-12A	PVL-14	PVL-12	PVL-16	PVL-20
1.	Rated Horse Power	B.H.P.	6/1	8/1	10/1	12/1	14/1	12/2	16/2	20/2
2.	Maximum Gross Power	B.H.P./kw	6/4.4	8/5.9	10/7.35	12/8.8	14/10.30	12/8.8	16/11.8	20/14.7
3.	Rated Speed	RPM	650	850	1000	1000	1000	650	850	1000
4.	Cylinder Position		Vertical	Vertical	Vertical	Vertical	Vertical	Vertical	Vertical	Vertical
5.	No. of Cylinder		One	One	One	One	One	Two	Two	Two
6.	Cyl. Bore & Stroke	Inch	4½ X 5½	4½ X 5½	4¾ X 5½	5 X 5½	5 X 5½	4½ X 5½	4½ X 5½	4¾ X 5½
		mm	114.3X139.7	114.3X139.7	120X139.7	127X139.7	127X139.7	114.3X139.7	114.3X139.7	120X139.7
7.	Flywheel Dimension & Face	Inch	23½ X 3½	23½ X 3½	20¼ X 3¾	23½ X 3½	25 X 4½	23½ X 3½	23½ X 3½	20¼ X 3¾
		mm	600 X 89	600 X 89	514 X 95	600 X 89	635 X 114	600 X 89	600 X 89	514 X 95
8.	Foundation Stud Hole	Inch	13 X 13	13 X 13	13 X 13	13 X 13	13 X 13	15 X 22	15 X 22	15 X 22
	Centre Distance	mm	330 X 330	330 X 330	330 X 330	330 X 330	330 X 330	381 X 559	381 X 559	381 X 559
9.	Crankshaft Centre	Inch	12½	12½	12½	13½	13½	9¾	9¾	9¾
	Distance from Base	mm	318	318	318	343	343	248	248	248
10.	Engine Total height	Inch	40	40	40	40	40	38	38	38
		mm	1016	1016	1016	1016	1016	965	965	965
11.	Fuel Oil Tank Capacity	Liter	8	8	10	10	12	12	12	12
12.	Lub. Oil Cap. in Chamber	Liter	5	5	5	5	5	7.5	7.5	7.5
13.	Overall Height	cms.	120	120	120	122	122	140	140	140
14.	Engine Nett Weight	kgs.	280	290	310	310	340	475	485	545
15.	Gross Weight	kgs.	380	390	410	425	455	615	625	645
16.	Size of Wooden Case	cms.	88X64X108	88X64X108	88X64X108	94X70X104	94X70X104	136X71X110	136X71X110	136X71X110
17.	Volume / Case	m3	0.608	0.608	0.608	0.69	0.69	1.06	1.06	1.06

* Marked ISI models



SELF PRIMING PUMPSET



PUMP - 4" X 4"



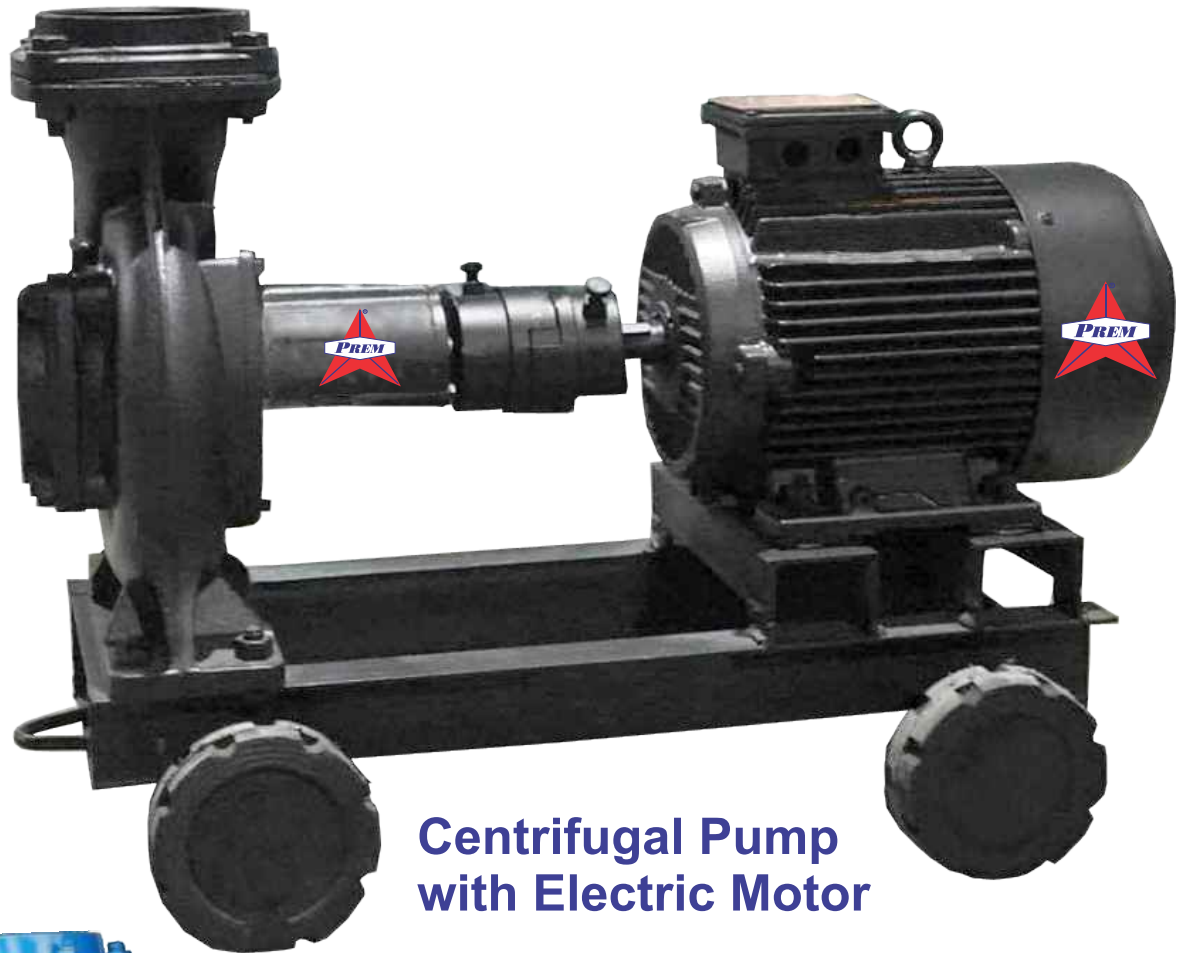
PUMP - 4" X 4"

Pump Specifications

MODEL	MOTOR HP	PIPE SIZE IN mm. Suc. X Del.	SPEED IN R.P.M.	TOTAL HEAD IN METERS													SOLID HANDLING SIZE (mm)
				10	12	14	15	16	18	19	20	22	24	25	26	28	
				DISCHARGE LITERS PER SECOND													
PSP-31	6.00	80 X 80	1500	17.1	15.0	13.5	11.9	8.1	5.4	3.1	-	-	-	-	-	-	15.5
PSP-31	12.00	80 X 80	1800	-	-	-	22.0	21.5	20.1	19.3	18.4	16.1	13.2	11.5	9.5	5.4	15.5
PSP-4LA	12.00	100X100	1500	-	35.7	33.2	32.0	30.6	27.7	26.1	24.4	20.9	16.6	14.0	10.9	-	18.5
PSP-4L	14.00	100X100	1500	-	39.8	38.4	37.5	35.5	33.4	31.8	30.0	25.8	21.0	17.9	15.4	9.2	23.0
PSP-6LA	22.00	150X150	1500	67.5	65.6	62.5	61.5	58.6	53.0	51.1	47.4	40.4	32.2	27.8	22.0	-	34.0
PSP-6L	26.00	150X150	1500	76.8	73.8	71.4	70.2	67.5	62.2	61.4	56.3	50.1	41.4	37.7	31.4	-	40.0



ELECTRIC PUMPING SET



**Centrifugal Pump
with Electric Motor**



Self Priming Pump with Electric Motor



DIESEL GENERATING SETS

Application Use : Pumpsets, Diesel Generating Sets,
Industrial & Construction Equipments

3.5 KVA TO 20 KVA



AIR COOLED MODEL

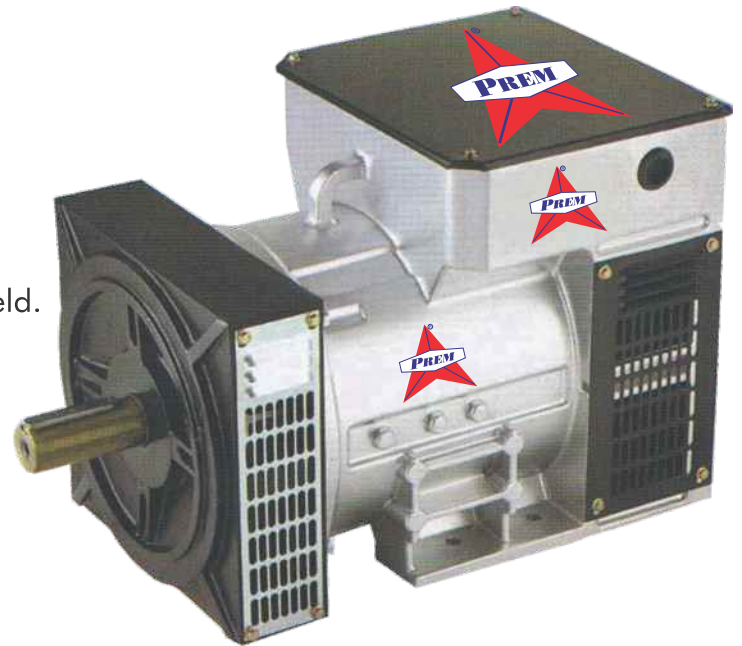


WATER COOLED MODEL

Range : 3.5 kVA to 125 kVA (Brushless Models Available)

Features :

- ▲ Low Maintenance.
- ▲ 100% Copper Winding.
- ▲ Alluminium Die Cast Body With Integral N.D.E. Shield.
- ▲ Cast Iron D.E.Shield.
- ▲ Life Lubricated Sealed Ball Bearings.
- ▲ Screen Protected Self Ventilated Machine.
- ▲ Degree of Protection : IP21
- ▲ The Alternator are Self Excited, Self Regulated and Supplied with Electronic Voltage Regulator or Compound Excitation Transformer.



TECHNICAL SPECIFICATION

Model	SP 132 5	SP 132 7.5	SP 132 10	SP 160 12.5	SP 160 15	TP 132 5	TP 132 7.5	TP 132 10	TP 132 12.5	TP 132 15	TP 160 20	TP 160 25	TP 160 30
Ac Output KVA	5	7.5	10	12.5	15	5	7.5	10	12.5	15	20	25	30
KW	5	7.5	10	12.5	15	4	6	8	10	12	16	20	24
Ac Volt	240	240	240	240	240	415	415	415	415	415	415	415	415
Ac Amp.	21	31.5	42	52	62.5	7	10.5	14	17.5	21	28	35	42
Hz.	50	50	50	50	50	50	50	50	50	50	50	50	50
P.F.	1.0	1.0	1.0	1.0	1.0	0.8	0.8	0.8	0.8	0.8	0.8	0.8	0.8
Voltage Regulation	+/-5%	+/-5%	+/-5%	+/-5%	+/-5%	+/-5%	+/-5%	+/-5%	+/-5%	+/-5%	+/-5%	+/-5%	+/-5%
Insulation CL	Class H	Class H	Class H	Class H	Class H	Class H	Class H	Class H	Class H	Class H	Class H	Class H	Class H
Connection	STAR	STAR	STAR	STAR	STAR	STAR	STAR	STAR	STAR	STAR	STAR	STAR	STAR
Rpm	1500	1500	1500	1500	1500	1500	1500	1500	1500	1500	1500	1500	1500

As continuous improvements are Contemplated. The Illustrations & Descriptions are not binding.

Normal Operating Condition :

Altitude : Less than 1000m (3300 ft)
 Ambient Temperature : Less than 40°C
 Power Factor : From 0.8 Lagging up to
 Unity Power Factor

Limit for Safe Operation :

Over Speed : 20% (1800 rpm for 60 Hz)
 Over Load : 110% of rated value for one Hr.

BEARINGS



SME Rating Agency of India Ltd.



Decide with Confidence

This is to certify that
Prem Engineering Private Limited
Plot No. 334, G.I.D.C., Aji Industrial Estate, Phase II,
Rajkot - 360 003, Gujarat, India
is now part of the
Dun & Bradstreet Global Database
and has been assigned the
D&B D-U-N-S® Number: 91-621-0339

For Dun & Bradstreet Information Services India Private Limited


Authorized Signatory

April 26, 2012

The fact that this business is registered in the D&B database should not be construed as suggesting that credit or any other financial or business transaction should be approved, denied, restricted or delayed. It only signifies that there is sufficient information in the database to assign a D&B D-U-N-S® Number.

D&B D-U-N-S® Number is a registered number of Dun & Bradstreet Corporation, USA.



MANUFACTURERS & EXPORTERS **PREM ENGINEERING PVT. LTD.**

Office : "ATUL" Building, Near Union Bank, Opp. Dharti Bank ATM,
Dhebar Road, Rajkot - 360 002. Gujarat - INDIA

Phone : +91-281-2231829

Mobile 📞 : +91-99099 99069 / 99099 42372

Sales Mobile : 📞 +91-9426805805 / 9909019095

Email : info@premengineering.co.in

Website : www.premengineering.co.in

® PREM and Logo registered trademark of PREM ENGINEERING PVT. LTD.

As continues improvements are contemplated the illustration, description and specifications are not binding.