



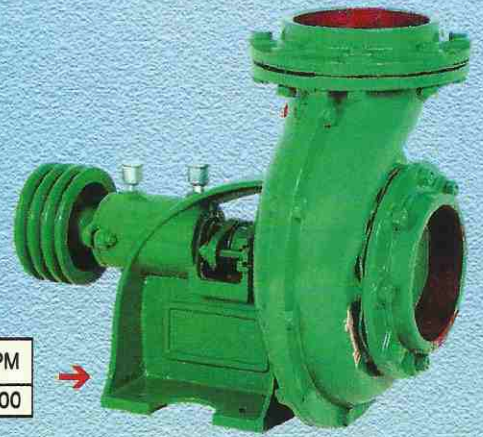


Type	Model	Size		RPM
		mm	Inch	
DB DC	KCDS-5	150x150	6x6	1500

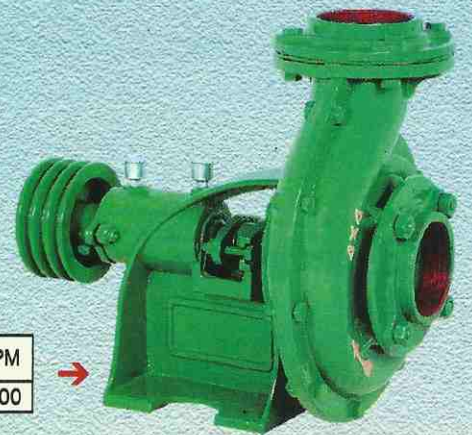


Type	Model	Size		RPM
		mm	Inch	
DB DC	KCDS-3	100x100	4x4	1500

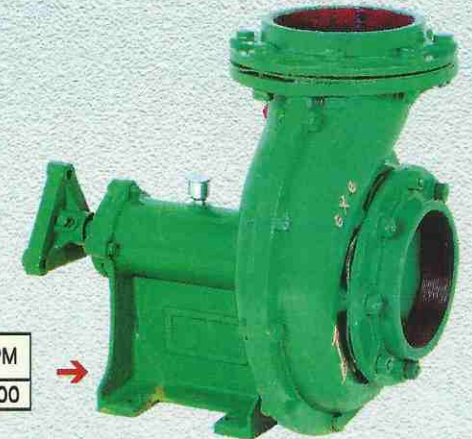
Type	Model	Size		RPM
		mm	Inch	
DB DC	KCDS-5	150x150	6x6	1500



Type	Model	Size		RPM
		mm	Inch	
DB DC	KCDS-3	100x100	4x4	1500



Type	Model	Size		RPM
		mm	Inch	
OSDC	KCDS-5	150x150	6x6	1500



### Direct Couple Split Casing Pump

Model	Size in mm	Size in Inch	Speed RPM	Prime Mover KW / HP	Total Head in Meter																			
					6	7	8	9	10	11	12	13	14	15	16	17	18	19	20					
KCDS-2	80 x 65	3 x 2½	1500	3.7 / 5						22	19.5	17	16	15	11									ISI
KCDS-2	80 x 65	3 x 2½	1500	4.8 / 6.5									23	19	18	16	14	8						ISI
KCDS-2	80x 80	3 x 3	1500	5.9 / 8											24	23	21	19	12					
KCDS-3	100 x 100	4 x 4	1500	5.9 / 8				39	35	31	25	17												
KCDS-3	100 x 100	4 x 4	1500	7.35 / 10						43	40	35	30	22										
KCDS-3	100 x 100	4 x 4	1500	8.8 / 12							46	41	35	25										
KCDS-4	125 x 125	5 x 5	1500	5.9 / 8	49	45	36	27	24															
KCDS-5	150 x 150	6 x 6	1500	5.9 / 8	48	43	40	28																
KCDS-6D	150 x 150	6 x 6	1500	7.35 / 10	51	46	42	32																

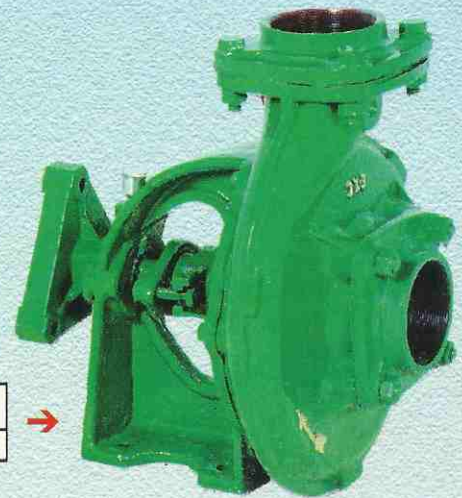
Discharge in LPS



Type	Model	Size		RPM
		mm	Inch	
DC	MDV-44+2	100x100	4x4	1500



Type	Model	Size		RPM
		mm	Inch	
DC	MDV-33+2	80x80	3x3	1500



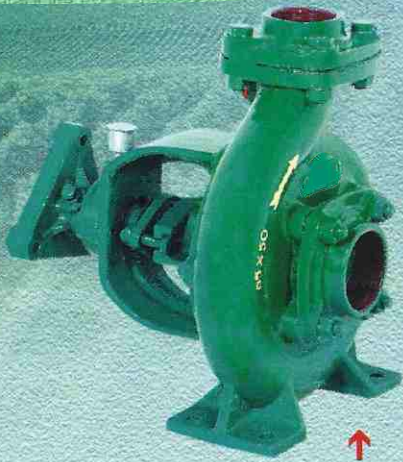
Type	Model	Size		RPM
		mm	Inch	
LWDC	MDV-32+2	80x65	3x2½	1500



Type	Model	Size		RPM
		mm	Inch	
OSDC	MDV-44+2	100x100	4x4	1500

### Direct Couple Volute Casing Center Delivery Pump

Model	Size in mm	Size in Inch	Speed RPM	Prime Mover KW / HP	Discharge in LPS	Total Head in Meter										
						10	11	12	13	14	15	16	17			
MDV-32+2	80 x 65	3 x 2½	1500	3.7 / 5												
MDV-33+2	80 x 80	3 x 3	1500	4.8 / 6.5			20	18.5	17.5	16.5	15	13	11			
MDV-44+2	100 x 75	4 x 3	1500	4.8 / 6.5		23	22.5	21.5	20.5	19	17.5	15	12			
MDV-44+2	100 x 100	4 x 4	1500	4.8 / 6.5				26	24	23	21	17	10			
								27.5	25.5	24	22	18	12			



Type	Model	Size		RPM
		mm	Inch	
DC	MDV-25	65x50	2½x2	1500



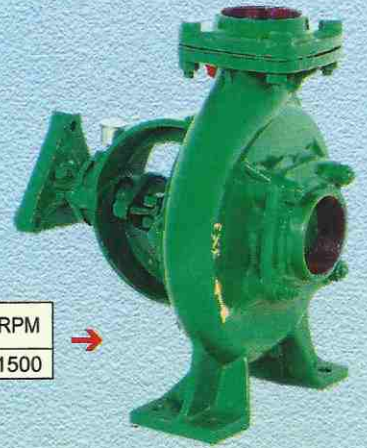
Type	Model	Size		RPM
		mm	Inch	
DC	MDV-32	80x65	3x2½	1500



Type	Model	Size		RPM
		mm	Inch	
DC	KCDV-3	100x100	4x4	1500



Type	Model	Size		RPM
		mm	Inch	
DC	KCDV-2	80x80	3x3	1500



Type	Model	Size		RPM
		mm	Inch	
DC	MDV-32	80x65	3x2½	1500

### Direct Couple Volute Casing Center Delivery Pump

Model	Size in mm	Size in Inch	Speed in RPM	Prime Mover KW / HP	Total Head in Meter										Remarks	
					8	9	10	11	12	13	14	15	16	17		
MDV-32	80 x 65	3 x 2½	1500	3.7/5					20	18.5	17.5	16.5	15	13	11	ISI
KCDV-1	80 x 65	3 x 2½	1500	4.8/6.5					20	19.5	17	15.5	14	10		ISI
KCDV-2	80 x 80	3 x 3	1500	4.8/6.5			23	22.5	21.5	20.5	19	17.5	15	12		ISI
KCDV-3	100x 75	4 x 3	1500	4.8/6.5					27.5	25.5	24	22	18.5	10		ISI
KCDV-3	100 x 100	4 x 4	1500	4.8/6.5		34	31		26.5	24.5	23	21	18	9		ISI
<b>Light Weight Couple Pump</b>																
MDV-25	65 x 50	2½ x 2	1500	2.55/3.5		12	10.5	9								ISI
MDV-25	65 x 50	2½ x 2	1800	2.55/3.5					13	12	10	8				ISI
MDV-25	65 x 50	2½ x 2	2050	3.5/4.5					13	12	11	10				ISI
MDV-32A	80 x 65	3 x 2½	1500	2.55/3.5		16	13	10.5								ISI
MDV-32A	80 x 65	3 x 2½	1800	3.3/4.5					19	17	15	12.5				ISI
MDV-32A	80 x 65	3 x 2½	2050	3.7/5					20.5	19.5	18	16.5	14.5	13		ISI
MDV-32A	80 x 65	3 x 2½	2200	3.7/5					20	19.5	18.5	17.5	16	14		ISI
MDV-33	80 x 80	3 x 3	1500	2.55/3.5	16	14.5	11	10								
MDV-33	80 x 80	3 x 3	1800	3.7/5		22	21	20.5	20	19.5	18	16				
MDV-33	80 x 80	3 x 3	2050	3.3/4.5			21	20	19	18	16.5	15	13.5			
MDV-33	80 x 80	3 x 3	2200	3.7/5				22.5	22	21	20	19.5	18	15.5		

Discharge in LPS



Type	Model	Size		RPM
		mm	Inch	
DC	KCDS-3	100x100	4x4	1500



Type	Model	Size		RPM
		mm	Inch	
DC	KCDS-2	80x80	3x3	1500



Type	Model	Size		RPM
		mm	Inch	
DC	KCDS-3	100x100	4x4	1500



Type	Model	Size		RPM
		mm	Inch	
DC	KCDS-4	125x125	5x5	1500



Type	Model	Size		RPM
		mm	Inch	
6D	KCDS-5	150x150	6x6	1500



Type	Model	Size		RPM
		mm	Inch	
DC	KCDS-5	150x150	6x6	1500



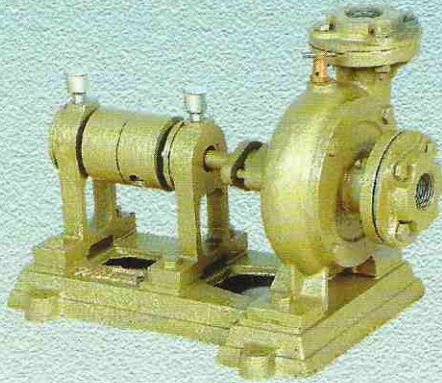
Type	Model	Size	
		mm	Inch
MEDIUM	KCSD-13	25x25	1x1



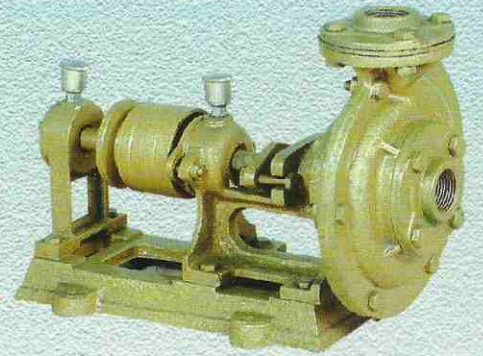
Type	Model	Size	
		mm	Inch
LIGHT	KCSD-11	25x25	1x1



Type	Model	Size	
		mm	Inch
HEAVY	KCSD-11	38x38	1½x1½



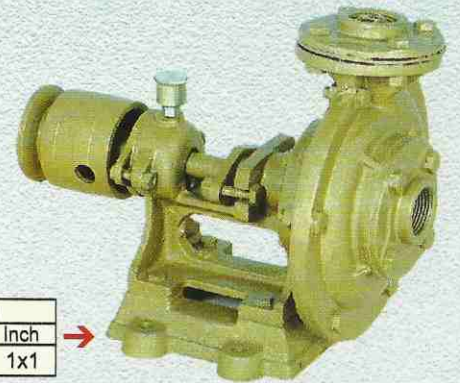
Type	Model	Size	
		mm	Inch
HEAVY	KCSD-10	25x25	1x1



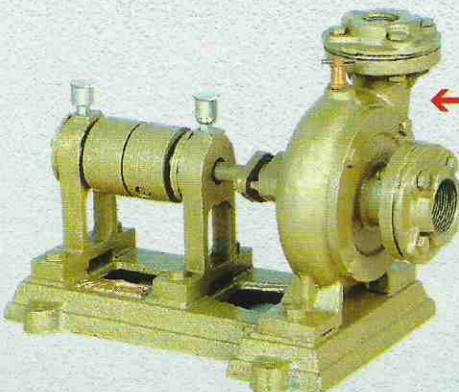
Type	Model	Size	
		mm	Inch
MEDIUM	KCCD-10	25x25	1x1



Type	Model	Size	
		mm	Inch
MEDIUM	KCCD-10	25x25	1x1



Type	Model	Size	
		mm	Inch
LIGHT	KCCD-10	25x25	1x1

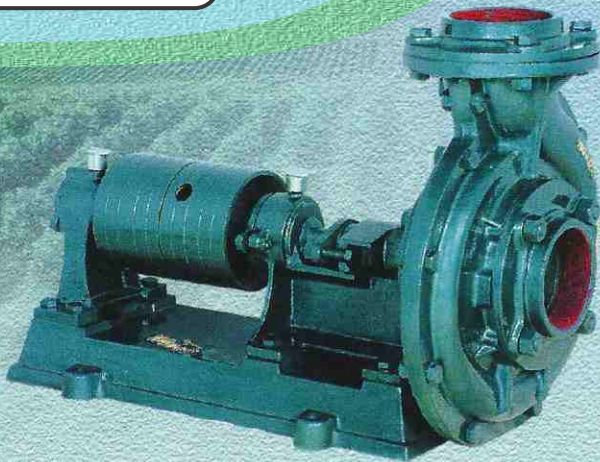


Type	Model	Size	
		mm	Inch
HEAVY	KCSD-11	38x25	1½x1

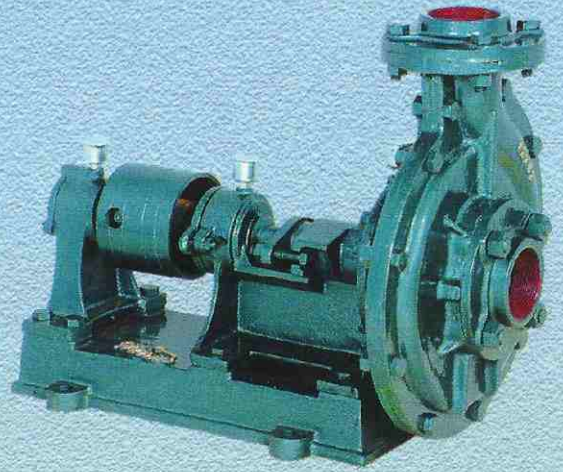
Type	Model	Size	
		mm	Inch
LIGHT	KCSD-11	38x25	1½x1



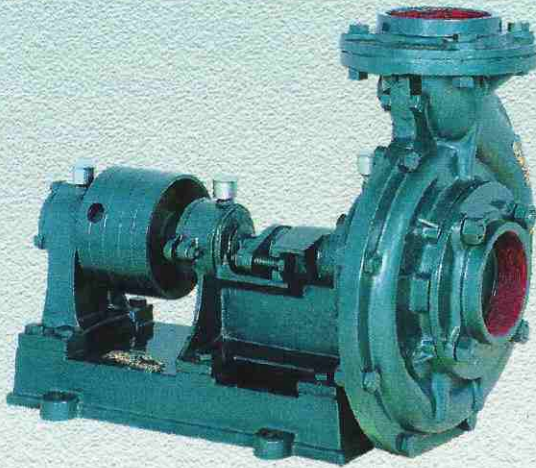




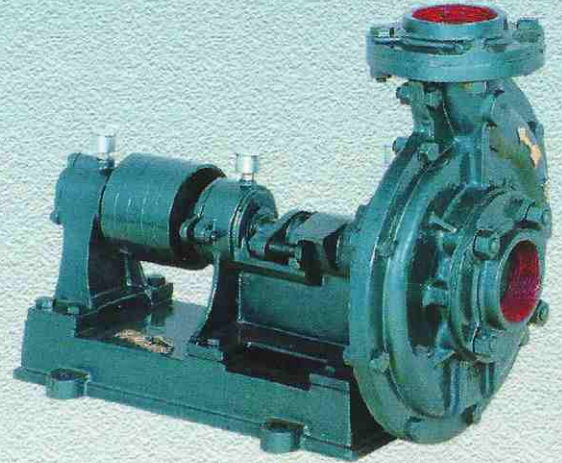
Type	Model	Size		RPM
		mm	Inch	
CDLF	KCCD-3	100x100	4x4	1450



Type	Model	Size		RPM
		mm	Inch	
CD	KCCD-1	62x62	2½x2½	1450



Type	Model	Size		RPM
		mm	Inch	
CD	KCCD-3	100x100	4x4	1450



Type	Model	Size		RPM
		mm	Inch	
CD	KCCD-2	80x80	3x3	1450

### Centre Delivery Belt Driven Pump

Model	Size in mm	Size in Inch	Speed RPM	Prime Mover KW / HP	Discharge in LPS.	Total Head in Meter									Remarks
						15	16	17	18	19	20	21	22	23	
KCCD-1	65 x 50	2½ x 2	1450	5.9 / 8					16	15	14	12	9	8	ISI
KCCD-1	65 x 65	2½ x 2½	1450	5.9 / 8				18.5	17.5	16	14	10			ISI
KCCD-2	80 x 65	3 x 2½	1450	7.35 / 10			23	22	21	19	16	11			ISI
KCCD-2+	80 x 65	3 x 2½	1450	4.4 / 6		20	19	18	17	14	10				ISI
KCCD-2	80 x 80	3 x 3	1450	7.35 / 10				23.5	22.5	21.5	20	18	13		ISI
KCCD-3	100 x 75	4 x 3	1450	10.3 / 14		43	39	31	27	23	10				ISI
KCCS-3	100 x 100	4 x 4	1450	10.3 / 14		44	41	34	30	25	12				ISI
Centre Delivery Anty Clock Wise Belt Driven Pump															
KCCD-1	62 x 62	2½ x 2½	1450	5.9 / 8					18	17	16	14	10		
KCCD-3	100 x 100	4 x 4	1450	10.3 / 14		38	36	35	34	30	28	22			