

AIR COOLED DIESEL ENGINES

Application Use : Pumpsets, Diesel Generating Sets, Industrial & Construction Equipments



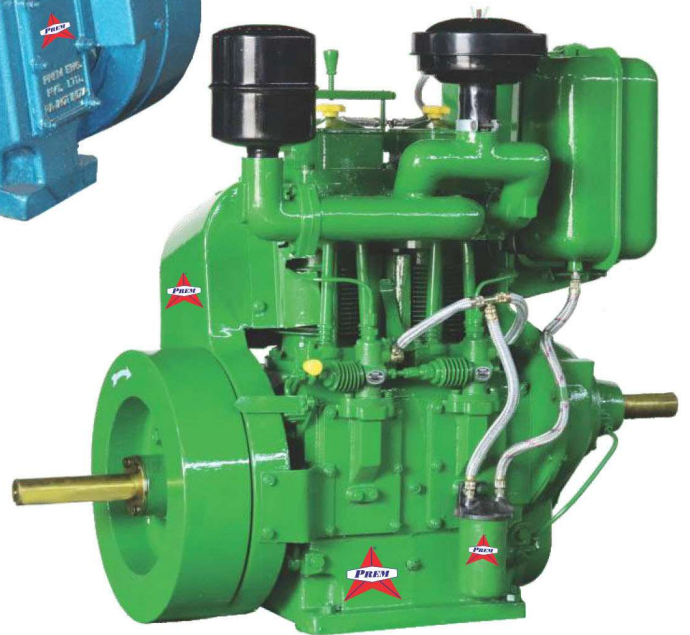
Blower Type Electric Start



With Variable Speed lever



TAF2 Type



TAF2 Type

AIR COOLED DIESEL ENGINES

Sr. No.	Description	Model	PA - 5 CAF-1	PA - 6 TAF-1	PA - 8 DAF - 8	PA - 10 DAF - 10	PAP - 12 TAF -12	PA - 12 TAF - 2	PA - 16 DAF - 16	PA - 20 DAF - 20
1.	Vertical, Air Cooled, Compression Ignition, Direct Injection, Four Stroke Cycle High Speed Diesel Engine	Type-1	PAP-5 TRB	PAP-6 TRB	PAP-8 TRB CAF-8	PAP-10 TRB CAF-10	PAP-12 TRB	BB BUSH GP	BB BUSH GP	BB BUSH GP
		Type-2	BB BUSH PP	BB BUSH GP	BB BUSH GP	BB BUSH GP	BB BUSH GP	BB BUSH GP	BB BUSH GP	BB BUSH GP
2.	Rated Power (As per Is : 1001-1981 & IS : 11170-1985)	HP/KW	5/3.7	6/4.4	8/5.9	10/7.35	12/8.8	12/8.8	16/11.8	20/14.7
3.	Rated Speed	RPM	1500	1500	1500	1500	1500	1500	1500	1500
4.	No. of Cylinders	---	One	One	One	One	One	Two	Two	Two
5.	Bore & Stoke in mm	mm	80/110	87.5/110	95/110	102/116	114/116	87.5/110	95/110	102/116
6.	Specific Fuel Consumption at Full Load and at std. ref. conditions	g/bhp. hr g/kwh.	185	185	185	185	185	185	185	185
			251	251	251	251	251	251	251	251
7.	Net Weight / Gross Weight	Kgs. (Approx)	160/210	170/220	190/240	200/250	210/260	275/350	285/360	295/370
8.	Size	In Inch	25 X 21 X 25	25 X 21 X 25	25 X 21 X 25	25 X 22 X 25	26 X 24 X 35	36 X 24 X 35	36 X 24 X 35	36 X 24 X 35

9. PA Models are with plunger type lub oil pump and sheet metal gear cover.

10. BUSH type models are with Gear oil pump and Cast Iron Gear cover.

11. Extra attachment are also available. They are at optional, Blower Type Electric also available.

Certificate of Registration

This is to certify that
the Quality Management System of

PREM ENGINEERING PVT. LTD.

PLOT NO. 334, G.I.D.C., AJI INDUSTRIAL ESTATE, PHASE - II,
RAJKOT - 360003, GUJARAT, INDIA

has been assessed and found to conform
to the requirement of

ISO 9001:2015

for the following scope

MANUFACTURER AND EXPORTERS OF HIGH SPEED DIESEL
ENGINES, SLOW SPEED DIESEL ENGINES, CENTRIFUGAL PUMPS,
SUBMERSIBLE PUMPS, HAND PUMPS, DIESEL GENERATING SETS
AND SPARE PARTS

Certificate No	18DQDM63	Issuance Date	: 30/07/2018
Initial Registration Date	: 30/07/2018	Date of Expiry*	: 29/07/2021
1st Surve. Due	: 30/06/2019	2nd Surve. Due	: 30/06/2020



DIRECTOR



ROHS Certification Pvt. Ltd.

408, Madhuban Building, 55, Nehru Place, New Delhi - 110 019, India | +91.11.41525522 | e-mail : info@rofscertification.co.in, www.rofscertification.co.in
The Registration is not a Product Quality Certificate *Subject to successful completion of surveillance audits Visit for verification on www.rofscertification.co.in
Certificate is the property of ROHS and returns when demanded



MANUFACTURERS & EXPORTERS PREM ENGINEERING PVT. LTD.

Factory : 334 GIDC Aji Industrial Estate Phase - II Rajkot -360003
Phone : +91-281-2387164 / 2387295
Mobile : +91-99099 99069 / 99099 42372
Email : info@premengineering.co.in
Website : www.premengineering.co.in
Show Room : Dhebar Road Near Corporation Bank Rajkot - 360002
Phone : +91-281-2231829